

Caterham 7 front cycle wing Bond in fixings



Step1.

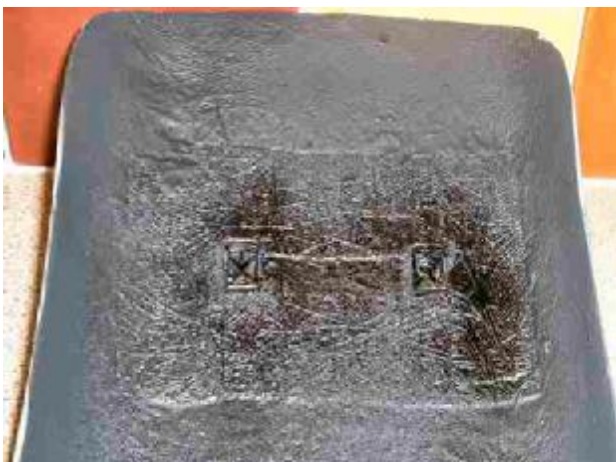
Bend the wire on the fastener outward slightly so that the wing stay sits on the base plate.
Position Fixings on front wing stays with cable ties in intended position.
Put small amount of blue tac on top of bighead fastener & position wing on top of fixings in required position.
Carefully cut all cable ties ensuring position of bighead fastners does not move.
Using indelible pen or scribe mark around outside of fastener. Ensure each fastener is bonded back into its original position retaining its correct orientation.

Step2.

Roughen surface of wing with coarse wet & dry & degrease with meths or similar.
Bond fixings onto inner surface of wing with P40 Fibreglass paste by putting a small amount of paste under fixing & positioning on wing, & smearing paste over edges of fastener.



Step3. Apply fibreglass matt & resin over P40 and around fixings, ensuring matt & resin remain below level of top of wire. This will allow the wing to sit as low as possible on wing stay.



Step4. Apply Rubberised stone chip resistant coating to entire underside of wing.

Fix wing to wing stay using cable ties. If fixings have moved slightly during the bonding process, the wing stays may be bent to accommodate offset.

Bighead fastners available from www.bighead.co.uk
Cable Tysap B32-15 Stainless Steel
01202 574601

P40, Fibreglass repair kit & stonechip coating all available from halfords.

Andy Brookman 16/07/03 Lotusandy@totalise.co.uk